

What is the Colorado AgrAbility Project?

The Colorado AgrAbility Project is a unique collaboration between Colorado State University Engagement and Extension and Goodwill of Colorado. The project is made possible from a grant provided by the United States Department of Agriculture (USDA), National Institute of Food and Agriculture (NIFA) and Senate Bill 21-137.

While this project is specific to Colorado, it is part of a national effort to help farmers, ranchers, agricultural workers, their families, and adjacent industries supporting agriculture that have been affected by: injuries, long-term illnesses, disabilities, behavioral health concerns, or other barriers inhibiting their ability to work

AgrAbility's goal is to provide information and resources to farmers, ranchers, farm workers and their families about assistive technology and/or farm/ranch site modifications that enable individuals with disabilities to remain involved in agriculture.

Who does AgrAbility Serve?

We assist anyone who resides in Colorado with a disability or long-term health condition who works in agriculture. This includes:

- Farm and/or Ranch Operators
- Farm and/or Ranch Employees
- Seasonal/Migrant Workers
- Family Members of Workers
- Farm/Ranch supporting industries



**ENGAGEMENT
AND EXTENSION**
COLORADO STATE UNIVERSITY



Goodwill
of
C O L O R A D O

Colorado
AgrAbility
Cultivating Accessible Agriculture



Contact us!

AgrAbility Program Manager

Candiss Leathers: 720-539-4435

Email: cleathers@goodwillcolorado.org

AgrAbility Co-Director

Dr. Rebecca Hill: 970-491-6570

Email: rebec.hill@colostate.edu



<https://agrability.colostate.edu/>

This material is based upon work supported by the USDA National Institute for Food and Agriculture, under a special project number 2022-41590-38119

Col.st/110t3



Supportive Services Include:

No-cost on-the-farm or ranch visits to help make your home, shop, farm or ranch more accessible. Recommendations for farm equipment adaptation, home modifications, and adaptive equipment. Educational workshops facilitated by CSU Extension for farmers, ranchers and family members with disabilities and the professionals who work with them.

Resource Referrals

- Farm site assessments to identify daily farm and living tasks that are difficult while a client is living and employed with a disability/limitation.
- Recommendations of: modifications, equipment, or assistive technology (AT) that will assist the client to complete tasks without further injury.
- Referrals to agency resources such as, but not limited to: peer support, transportation services, clinical services, etc.

Educational Services

We offer presentations and workshops to individuals involved in agriculture, service professionals, and other interested groups throughout Colorado.

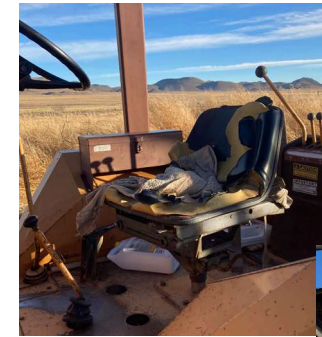
Topics include, but not limited to: Aging, Ergonomics, and Behavioral Health.

Renewing Hope, Restoring Productivity

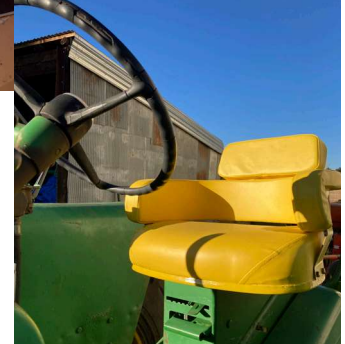


"I just wanted to say thank you, as AgrAbility has been instrumental in this process and without the project, I think we probably would have given up long ago."

- Ryan Davis, AgrAbility Client



Before



After

Pictured above is an example of a before and after tractor seat, a recommendation made by Colorado AgrAbility staff!

