



---

# COLORADO

## Division of Criminal Justice

Department of Public Safety

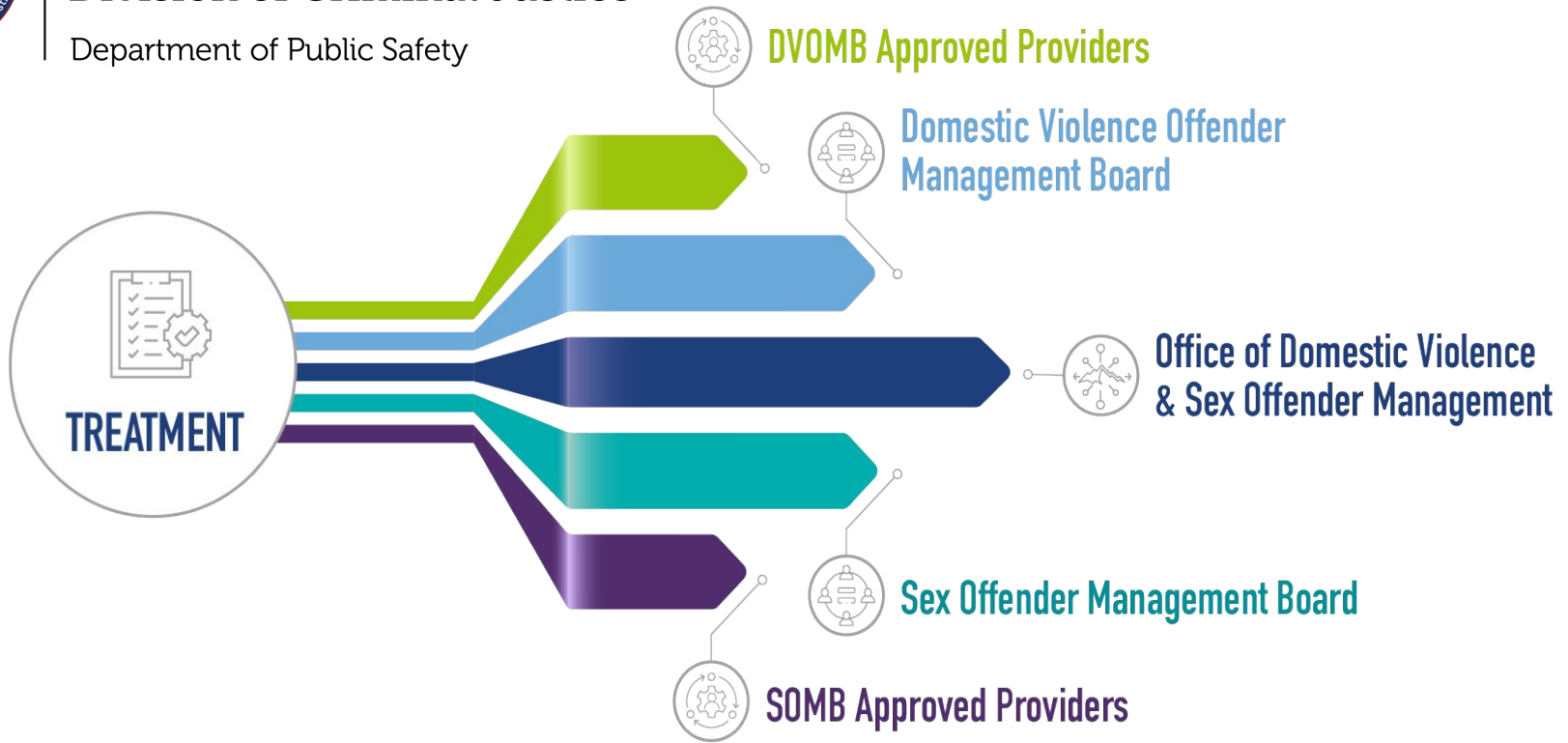
2026 SOMB Annual Legislative Report Presentation to  
the Joint Judiciary Committee  
January 20, 2026



# COLORADO

## Division of Criminal Justice

Department of Public Safety





**COLORADO**

**Division of Criminal Justice**

Department of Public Safety

# **Research, Data & Best Practices**

**Dr. Rachael Collie**

# STATUTORY REQUIREMENTS (SB 23-164)

## Parole release guideline instrument for determinate sentence cases



### Evidence-Based

Must incorporate Risk-Need-Responsivity (RNR) principles or other validated correctional models.



### Timely Access

Guidelines must remain flexible to ensure programs prevent harm to potential victims through timely intervention.



### Treatment Equity

Parole cannot be denied solely due to a lack of institutional treatment access if otherwise eligible.

# Determinate Sentence Parole Release Workgroup

## Collaborative Partnerships



SOMB & State Board of Parole



Dept. of Corrections (DOC)



DCJ Office of Research & Statistics



10 Public Meetings since 2024

# Structured Decision-Making (SDM)

## Why SDM?

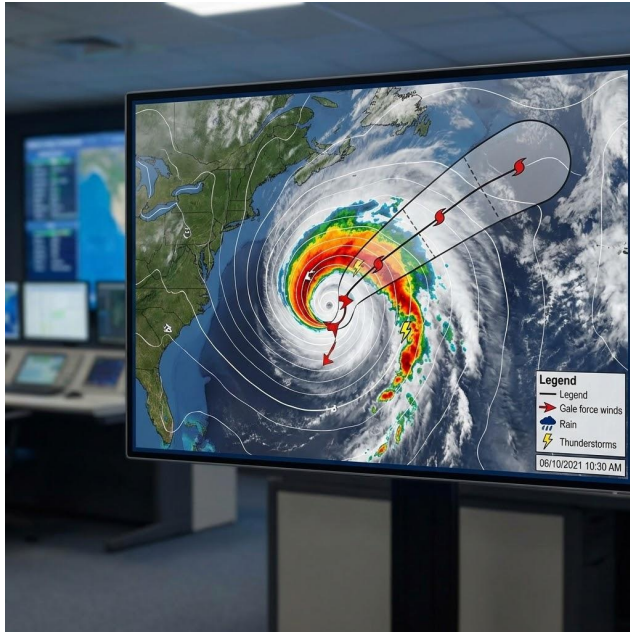
Unstructured judgment creates variability and lower accuracy. Actuarial may limit professional discretion emphasized in statute. SDM improves **consistency** and **defensibility** without removing professional discretion. SDM allows for a holistic view of the totality of circumstances.

## Other Options Considered

- Unstructured, Risk-Informed Pathway
- Actuarial

*"Parole decision-making is a complex process that involves assessing an incarcerated individual's risk of recidivism and their readiness for reintegration into society"*

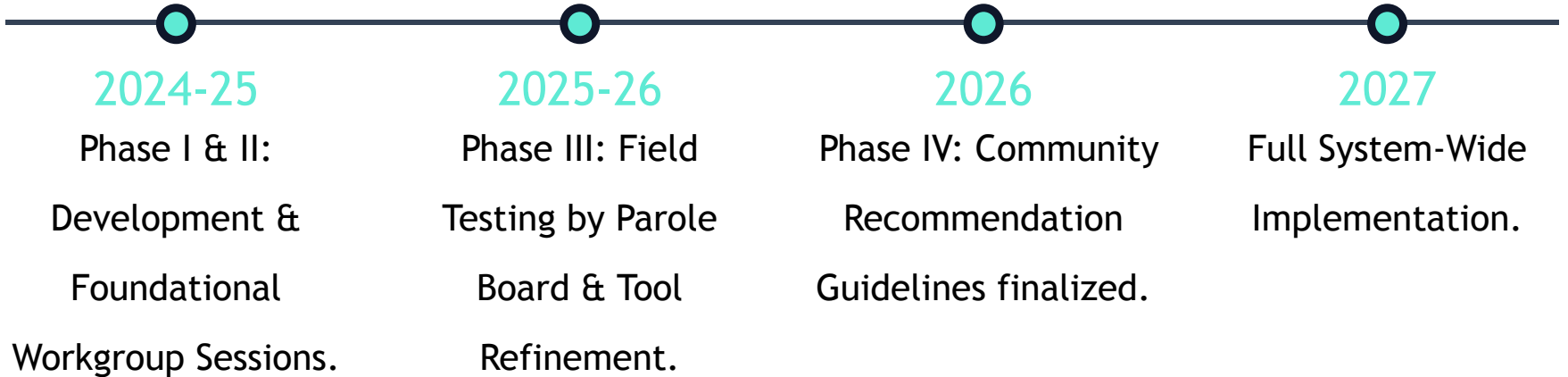
# The SDM Framework



## Two-Part Evaluation Profile

- **Part A: Risk Indicators**  
Aggravating factors focused on empirically supported risk domains.
- **Part B: Protective Factors**  
Mitigating indicators focusing on reentry stability and support systems.
- *Decision Support: Ratings provide a profile for Parole Board members to determine suitability reliably.*

# Implementation Roadmap





**COLORADO**

**Division of Criminal Justice**

Department of Public Safety

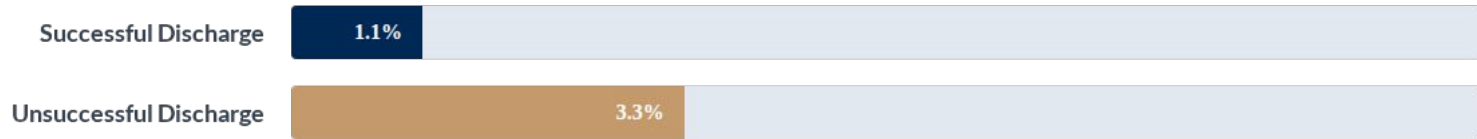
# Treatment Effectiveness

## Core Findings from Two Decades of Research

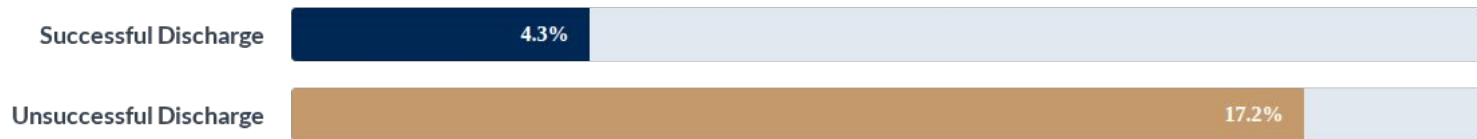
# SOMB Recidivism & Desistance Project

**Key Finding:** Successful treatment is strongly linked to reduced recidivism. Adults who successfully completed treatment had significantly lower rates of both sexual and violent recidivism compared to those unsuccessfully discharged.

## New Sex Offense Charge






## New Violent Offense Charge



# Treatment Effectiveness

## Three Components of Success

-  **Risk Level Matters:** High intensity is vital for high-risk individuals; low-risk individuals benefit from proportionate, targeted support.
-  **Dynamic Risk Factors:** Targeting changeable factors (self-regulation, attitudes) is the key pathway to reducing recidivism.
-  **Continuity of Care:** Community-based treatment produces stronger effects when it follows institutional programming.

*Policy Implication: Move away from "program completion" rules toward individualized, structured decision-making.*



**COLORADO**

**Division of Criminal Justice**

Department of Public Safety

# Milestones and Achievements

Raechel Alderete

# Applications and Oversight

- **Provider Applications and Listings:** Received 335 applications in 2025 (a 23% increase over 2024). By year's end, 256 applications were approved and 81 remained pending.
- **Provider Availability:** The latest snapshot reflects a total of 325 individual providers, a slight decrease from the 331 reported in 2024. Geographically, these providers maintain a presence across all 23 judicial districts in Colorado.
- **Complaints:** The SOMB received 22 complaints against 17 Approved Providers in 2025. By year-end, 7 were founded, 8 were unfounded, and 1 was dismissed, with the remaining complaints still under review.

# SB23-164: Standards Compliance Reviews

- **The Mandate:** Conduct Standards Compliance Reviews on 10% of Approved Providers every two years.
- **Launch Date:** September 1, 2024.
- **Implementation:** 16 total reviews initiated (14 random). On track with 5% of all active providers monitored in 2025.

# Community Roundtable Discussions

## Community Impact & Educational Outreach

- **Statewide Roundtables:** Fort Collins, Boulder, Montrose, and Weld County.
- **Training Delivery:** 32 trainings, collectively reaching over 1,400 attendees.
- **Training emphasized implementation of core standards as well as specialized topics such as working with high-risk individuals and reducing provider burnout.**





**COLORADO**

**Division of Criminal Justice**

Department of Public Safety

# Policy Issues & Recommendations

Jesse Hansen, MPA

# SOMB Strategic Planning Initiative

- Shaping the Future
  - 2028 Sunset Review: Why Now and For What?
  - Inventory: Key Issues, Insights, and Trends
- **Retreat Date:** August 15, 2025.
  - **Focus Areas:** Integrated Strategy
  - Systemic Modernization
  - Data-Driven

# Strategic Themes



## SOMB Guiding Principles

Community safety, rights and interests of victims, offenders are capable of change, community supervision, individualized treatment, research and best practices, continuum of treatment options, multi-disciplinary collaboration, humane treatment, holistic approaches

# The Victim-Centered Safety Model

## Why the Victim Voice Matters

- **Recidivism Reduction:** Research confirms that integrating the victim's voice alongside treatment and supervision lowers re-offense rates.
- **Victim Representatives:** Ensures victim safety and interests are considered and that the team operates with a victim-centered approach.
- **Core Integrity:** A victim-centered approach is not optional—it is the foundation of the TEAMS model integrity.

# SOMB Strategic Response

## Bridging the Gap with the Surcharge Fund

- **Sex Offender Surcharge Supplemental:** The SOMB approved a one-time \$100,000 allocation.
- **Source:** Cash fund derived from fees assessed to individuals convicted for a qualifying sex offense.
- **Strategic Partnerships:** Collaborative effort between:
  - The SOMB
  - Colorado Coalition Against Sexual Assault (CCASA)
  - Colorado State University (CSU)

# Standardizing Training Statewide

## Supporting Equitable Access to Post-Conviction Victim Advocacy

- **Developing Curriculum:** Creating a standardized, statewide training program for victim advocates focused on post-conviction related parts under the Standards.
- **Sustainable Infrastructure:** Building a competent, trained victim advocates that remains resilient regardless of federal funding fluctuations.

Thank you. What are your questions?



Striving to make a positive difference for victims, offenders, their families, and communities.